

Overview

You have been provided with an Eclipse MINI ECG sensor by your healthcare provider for diagnostic purposes. You will also have been provided with an Eclipse MINI recorder either separately or already attached to the Eclipse ECG Sensor.

The sensor allows your ECG to be recorded for a period of time as recommended by your healthcare provider. For an extended recording additional Sensors may have been supplied.

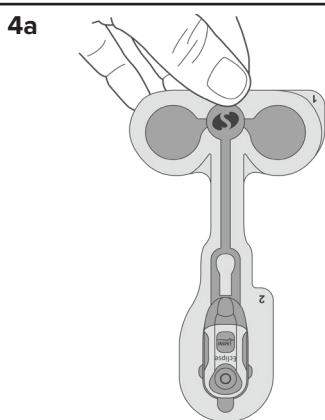
These instructions give recommendations for how to apply the Sensor to give the best comfort and wear time. Please read them carefully before starting the recording and retain these instructions for reference.

If you need to change the Sensor during the recording, then these instructions should be followed for each patch.

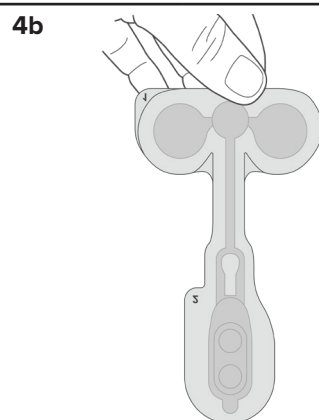
A family member or carer can provide assistance or apply the sensor if necessary.

Applying the Sensor

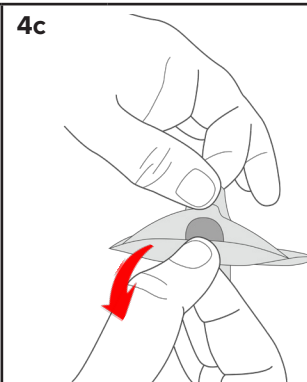
- 1** Shave the chest of any hair where the Sensor is going to be located (see image 4g), clean the area using a mild soap solution (that does not contain any moisturiser) to remove any skin oils or lotions, rinse the area and dry. Do NOT use an alcohol wipe.
Note: It is very important that the skin is free from moisturisers, lotions, or oils.
Allow a two minute drying time before applying the Sensor.
- 2** Optional: For best ECG quality results, conduct a light skin abrasion with suitable skin abrasion pads or materials. Do not over prepare the skin as this can cause irritation when used over prolonged recording periods.
- 3** Remove the Sensor from the bag. If the Eclipse MINI recorder has not already been connected, then plug it in now. If, when first plugged in the recorder shows a red light then do not proceed and contact your healthcare provider. A green or blue light is normal.
- 4** Hold the Sensor upside down with the Number 3 sensor tab and carefully peel off the backing on area labelled Number 1. Peel from the top and each side to avoid the adhesive material adhering to itself.



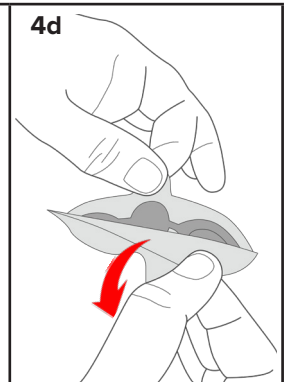
Hold via tab 3.



Peel it away – next 4 images detail how to do this.

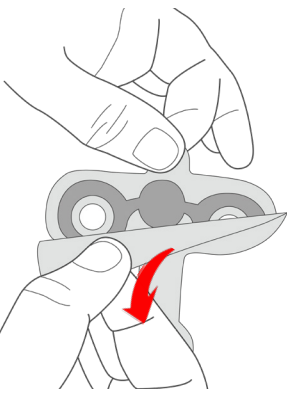


Start in the centre.



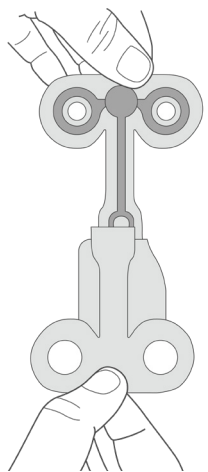
Then peel away the right side.

4e



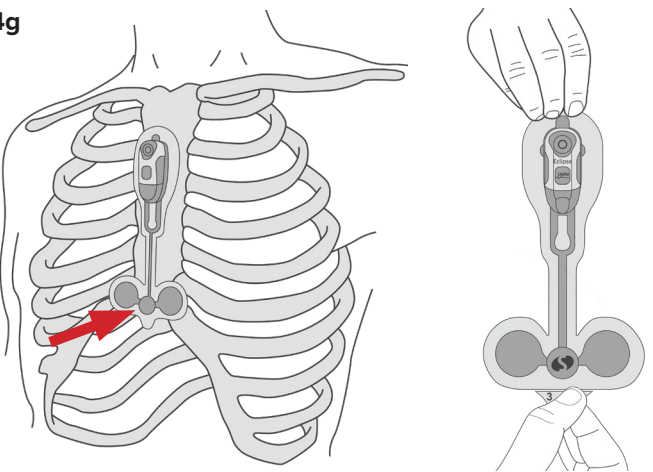
Peel down and try and avoid the two electrodes touching.

4f



Peel down and try and avoid the two electrodes touching.

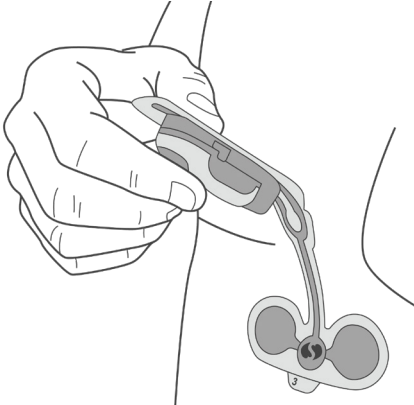
4g



Next, using your finger, gently locate the bottom of your breastbone. You may feel a small bump in this area. This is where to position the small circle between the bottom electrodes.

Rotate the Sensor so that the recorder is at the top and hold by the top and bottom and apply a slight tension to the Sensor to avoid creases prior to application.

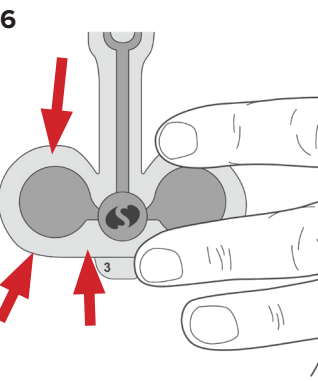
5



Holding the top of the sensor carefully place the lower portion on the chest as shown above. This may be easier if done standing in front of a mirror or assisted by someone else. Keep a relaxed, upright posture while doing this.

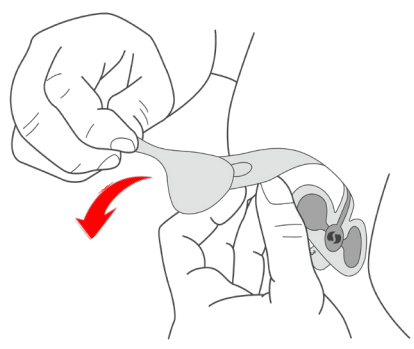
Note: During the application, be careful to not create creases on the adhesive.

6



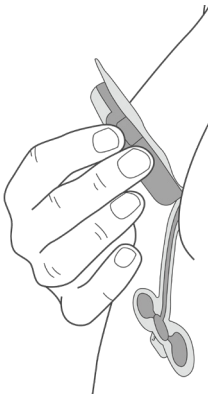
Gently pat the sensor adhesive area onto the chest.

7



Peel the sensor backing area labelled Number 2.

8



Keeping a relaxed upright posture, roll the Sensor onto the upper chest area.

Note: Standing in a neutral position ensures the Sensor material is not applied under tension which may result in irritation or the patch detaching prematurely as you bend and move around during normal activity.

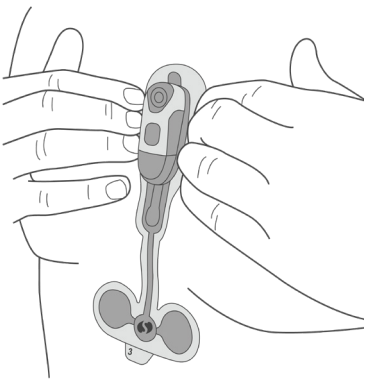
9

Once the top of the Sensor is placed on the body the recorder will light for a few seconds to indicate it is being worn.

The recorder will then show a green flashing heartbeat light for up to 30 seconds.

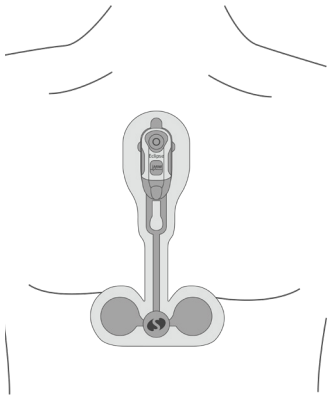
If a solid or flashing red light is shown, then this indicates a problem with the recorder or Sensor. Do not proceed with the recording in this case and contact your healthcare provider.

10



Apply light pressure to each adhesive area of the Sensor for around 30 seconds, making sure they're stuck down particularly around the edges. The small paper tab (marked number 3) on the bottom of the sensor can now be removed and the Sensor pressed down.

11



The Sensor is now fully attached and ready for wear.

It is recommended to avoid strenuous activity for at least an hour after applying the Sensor to give best adhesive performance.

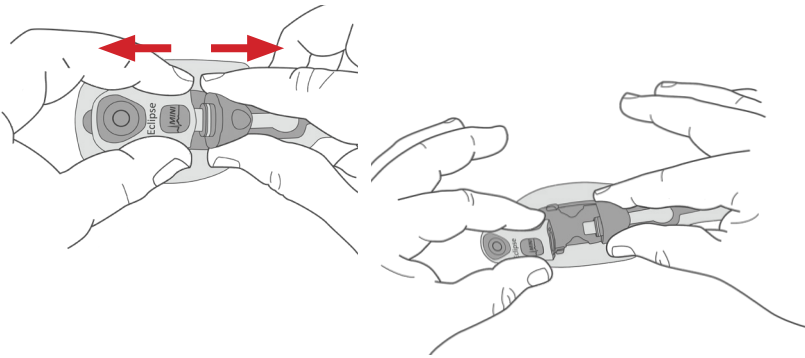
During the test

- If any part of the Sensor becomes unstuck, please press it down for a few seconds with your finger.
- The Sensor and recorder can be worn in the shower. However, it is recommended that you shower with your back to the water stream and gently pad and press dry the Sensor after your shower.
- If the Sensor gets wet, it will dry out and you may see an occasional red flashing light during this process. If the red flashing light continues for an extended period, please contact your healthcare facility for advice.
- You may experience some mild intermittent itching from under or around the Sensor, but this should pass. If itching or irritation persists, please contact your healthcare provider.
- Please refrain from wearing an under-wire bra. No bra at all is the best option or a sports or fabric bra as needed. This prevents bra material from rubbing against the Sensor that could cause premature detachment of the Sensor.
- Body lotions and sprays can be applied to areas surrounding the Sensor, but please ensure they are not applied or run onto the Sensor adhesive material. This can cause premature detachment of the Sensor.

Changing the Eclipse ECG Sensor

Removing the Recorder

1



Holding the bottom of the recorder holder with one hand, hold the side of the recorder with the other and pull the recorder from the Sensor as below.

Removing the Sensor

1

Using a baby wipe or an adhesive removal pad, wipe around the edge of the Sensor and gently start to peel back the edges.

2

Work your way around the Sensor carefully removing each adhesive area until the recorder and sensor are fully detached from the chest. Holding the Sensor adhesive material and pushing the skin away from the adhesive in small steps can be easier than peeling in one go.

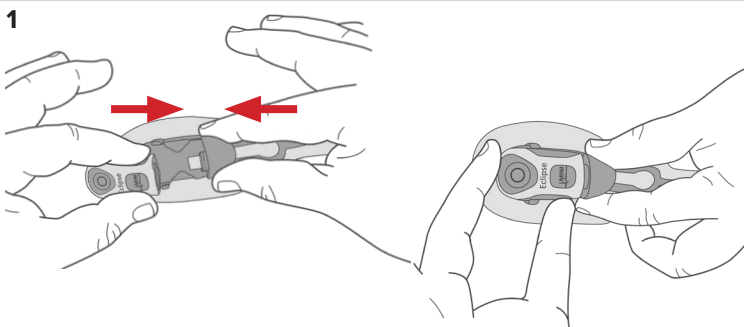
3

If you are having difficulty with removal of the Sensor, using warm water or someone to assist you can help.
Do NOT pull the Sensor off rapidly as this can damage the skin.

Reconnecting the recorder

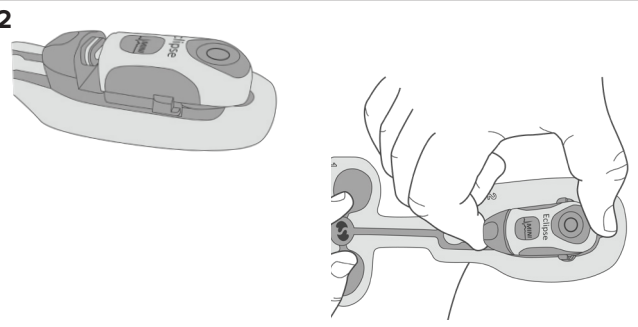
Reconnect the recorder as detailed below then follow the instructions on page 1 to apply the new Sensor.

1



Slide the recorder into the Sensor recorder holder from the top down as below.

2



Ensure the recorder is flat in the holder then squeeze the recorder into the Sensor holder.

Turn to page 1 and follow instructions for applying the Sensor.



WARNING

- The Eclipse ECG Sensor contains coin cell batteries that should be disposed according to local regulations. Batteries should never be swallowed as this can pose a serious health risk. Ensure they are kept away from children.
- The Eclipse ECG Sensor is only designed for use with the Eclipse MINI recorder. Do not connect other equipment to the sensor.
- The Eclipse ECG Sensor is a single use, disposable device.
- Used Eclipse ECG Sensors should be treated as biohazard waste. The Eclipse MINI ECG Sensor and batteries should be disposed of according to local waste disposal regulations.
- This Eclipse ECG Sensor is contra-indicated for patients with known allergic reactions or hypersensitivity to adhesives or hydrogel.
- Prolonged Eclipse ECG Sensor wear can cause excessive itchiness or irritation and redness to the skin but is unlikely to be permanent. Use of appropriate medical adhesive removal wipes helps reduce the chance of skin irritation post patch removal.
- Patients may suffer allergic skin reactions from the adhesive of the Eclipse ECG Sensor, causing reddening, soreness, or irritation.
- The Eclipse ECG Sensor might not be suitable for patients with sensitive or fragile skin.
- The Eclipse ECG Sensor or the Eclipse recorder must not get excessively wet such as by swimming or having a bath, but showering is permitted.
- Using a defibrillator with the Eclipse ECG Sensor attached to the patient may reduce the effectiveness of the defibrillator. The Eclipse ECG Sensor must be removed prior to defibrillating a patient.
- Do not modify this equipment without authorisation of the manufacturer. There are no user / patient serviceable parts in the device and no routine adjustments or calibration are required to be made by the user / patient to maintain its operation.
- Never attempt to connect any other device or instrument to the internal connections or circuitry of the Eclipse recorder while it is connected to a patient. The electrodes of the Eclipse ECG Sensor must not be allowed to contact other conductive parts even if they are grounded.
- The Eclipse ECG Sensor is not designed for use in proximity to high frequency surgical equipment or near an MRI machine. Remove the Eclipse ECG Sensor before entering the MRI room or commencing treatment involving such equipment.

If you have any questions or problems, please contact the hospital or caregiver via the details shown in your Patient Diary or otherwise provided.

R_x only

